

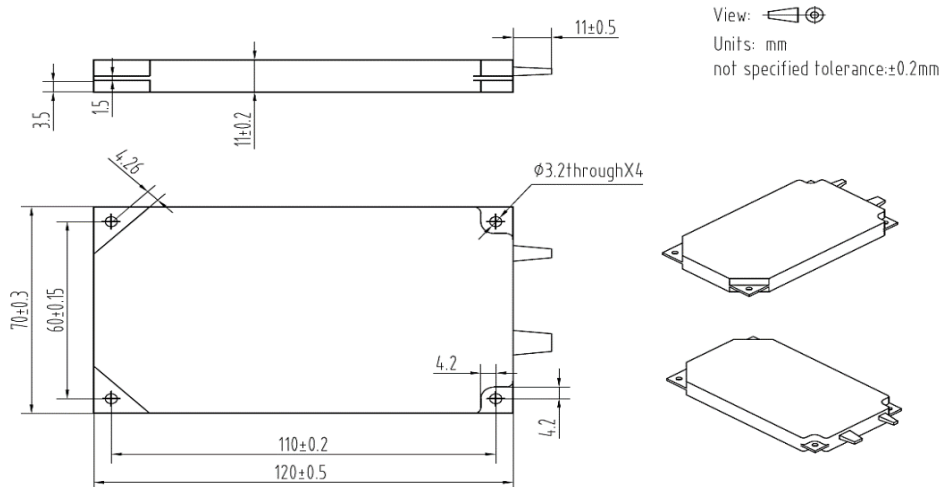
50G 96CH Athermal AWG DWDM Module (AAWG)

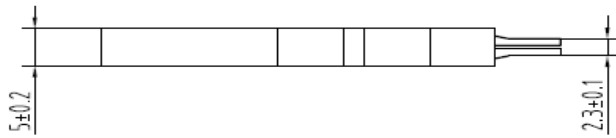
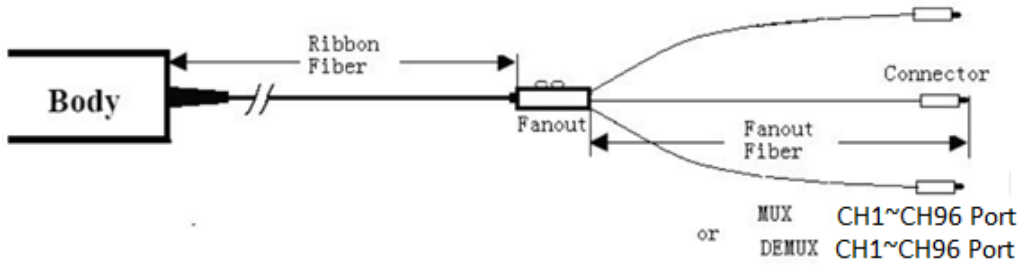
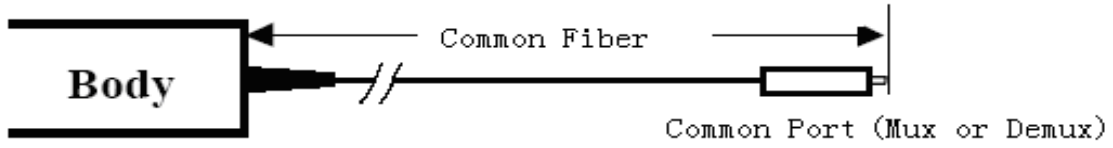
Specifications

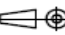
Parameters	Unit	Values
Number of Channel	ch	96
Channel Spacing	GHz	50
Center Wavelength	nm	ITU Grid
ITU#		C ⁺ 13/C14/C ⁺ 14/.../C60/C ⁺ 60/C61
Wavelength Accuracy	nm	±0.05
1dB Pass Band	nm	≥0.20
3dB Pass Band	nm	≥0.28
Insertion Loss	dB	≤6.0
Ripple	dB	≤0.5
Loss Uniformity	dB	≤1.3
Adjacent Channel Isolation	dB	≥25
Non-Adjacent Channel Isolation	dB	≥30
Total Cross-Talk	dB	≥20
PMD	ps	≤1.0
Chromatic Dispersion(CD)	ps/nm	±20
PDL	dB	≤0.5
Return Loss	dB	≥45
Max Optical Power Handling	mW	500
Pigtail Type @ Common		SMF-28e 900μm Loose Tube 0.5+/-0.05m
Pigtail Type @ ITU Channel Port		SMF-28e, 8×12 ribbon 0.5+/-0.05m, fanout 900μm 0.5+/-0.05m
Connector Type		SC/UPC or LC/UPC
Operation Humidity	%RH	5~85
Operating Temperature	°C	-5~+65
Storage Temperature	°C	-40~+85
Package (mm)	mm	120x70x11

*Above specifications are for devices without connector.

Package Dimensions

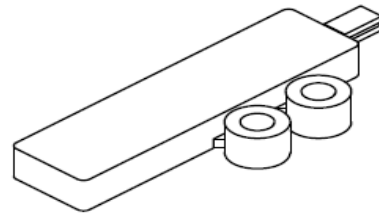
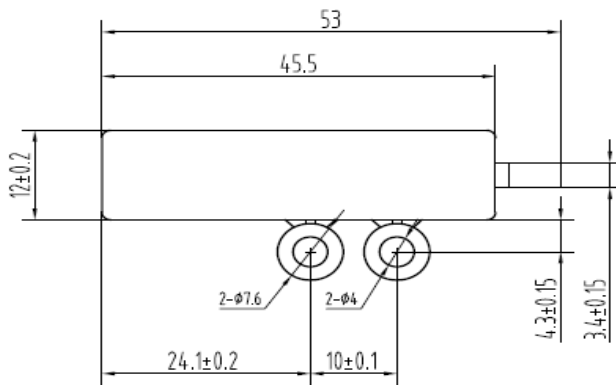




View: 

Units: mm

Not specified tolerance: ±0.3mm



Channel Table

No	Channel	f(Ghz)	λ (nm)	No	Channel	f(Ghz)	λ (nm)	No	Channel	f(Ghz)	λ (nm)
1	C ⁺ 13	191350	1566.72	33	C ⁺ 29	192950	1553.73	65	C ⁺ 45	194550	1540.95
2	C14	191400	1566.31	34	C30	193000	1553.33	66	C46	194600	1540.56
3	C ⁺ 14	191450	1565.90	35	C ⁺ 30	193050	1552.93	67	C ⁺ 46	194650	1540.16
4	C15	191500	1565.50	36	C31	193100	1552.52	68	C47	194700	1539.77
5	C ⁺ 15	191550	1565.09	37	C ⁺ 31	193150	1552.12	69	C ⁺ 47	194750	1539.37
6	C16	191600	1564.68	38	C32	193200	1551.72	70	C48	194800	1538.98
7	C ⁺ 16	191650	1564.27	39	C ⁺ 32	193250	1551.32	71	C ⁺ 48	194850	1538.58
8	C17	191700	1563.86	40	C33	193300	1550.92	72	C49	194900	1538.19
9	C ⁺ 17	191750	1563.45	41	C ⁺ 33	193350	1550.52	73	C ⁺ 49	194950	1537.79
10	C18	191800	1563.05	42	C34	193400	1550.12	74	C50	195000	1537.40
11	C ⁺ 18	191850	1562.64	43	C ⁺ 34	193450	1549.72	75	C ⁺ 50	195050	1537.00
12	C19	191900	1562.23	44	C35	193500	1549.32	76	C51	195100	1536.61
13	C ⁺ 19	191950	1561.83	45	C ⁺ 35	193550	1548.91	77	C ⁺ 51	195150	1536.22
14	C20	192000	1561.42	46	C36	193600	1548.51	78	C52	195200	1535.82
15	C ⁺ 20	192050	1561.01	47	C ⁺ 36	193650	1548.11	79	C ⁺ 52	195250	1535.43
16	C21	192100	1560.61	48	C37	193700	1547.72	80	C53	195300	1535.04
17	C ⁺ 21	192150	1560.20	49	C ⁺ 37	193750	1547.32	81	C ⁺ 53	195350	1534.64
18	C22	192200	1559.79	50	C38	193800	1546.92	82	C54	195400	1534.25
19	C ⁺ 22	192250	1559.39	51	C ⁺ 38	193850	1546.52	83	C ⁺ 54	195450	1533.86
20	C23	192300	1558.98	52	C39	193900	1546.12	84	C55	195500	1533.47
21	C ⁺ 23	192350	1558.58	53	C ⁺ 39	193950	1545.72	85	C ⁺ 55	195550	1533.07
22	C24	192400	1558.17	54	C40	194000	1545.32	86	C56	195600	1532.68
23	C ⁺ 24	192450	1557.77	55	C ⁺ 40	194050	1544.92	87	C ⁺ 56	195650	1532.29
24	C25	192500	1557.36	56	C41	194100	1544.53	88	C57	195700	1531.90
25	C ⁺ 25	192550	1556.96	57	C ⁺ 41	194150	1544.13	89	C ⁺ 57	195750	1531.51
26	C26	192600	1556.55	58	C42	194200	1543.73	90	C58	195800	1531.12
27	C ⁺ 26	192650	1556.15	59	C ⁺ 42	194250	1543.33	91	C ⁺ 58	195850	1530.72
28	C27	192700	1555.75	60	C43	194300	1542.94	92	C59	195900	1530.33
29	C ⁺ 27	192750	1555.34	61	C ⁺ 43	194350	1542.54	93	C ⁺ 59	195950	1529.94
30	C28	192800	1554.94	62	C44	194400	1542.14	94	C60	196000	1529.55
31	C ⁺ 28	192850	1554.54	63	C ⁺ 44	194450	1541.75	95	C ⁺ 60	196050	1529.16
32	C29	192900	1554.13	64	C45	194500	1541.35	96	C61	196100	1528.77

Ordering Information

AAWG- ①①①-②③③-④④④④④④④④④-⑤⑤⑤-⑥⑥⑥-⑦⑦

①	Channel Space	0.5=50Ghz;
②	Passband Profile	F=Flat Top;
③	Channel Number	96=96 Channel;
④	Start ITU Channel	C ⁺ 13~C61;
⑤	Pigtail Type	900=900um Loose Tube;
⑥	Length	0.5=0.5/0.5/0.5m;
⑦	Connector	NE=None; LC=LC/UPC; SC=SC/UPC; XX=Other;